

KDS 330 – BUILT FOR TODAY, READY FOR TOMORROW



The flush-mounted KDS 330 signalization family for residential and commercial buildings is a revolution in elevator design. Its modular structure means you can swap out different elements – such as the faceplate, display, and even buttons – to add new functions and create a unique look and feel. KDS330 touchless option available.

CAR OPERATING PANEL (COP)



FH COP



FH COP

Mounting type
Landing devices flush/surface mounted
Large HL only flush mounted

Display
9 inch STN LCD (COP)
5.7 inch STN LCD (COP, HI)
dot-matrix (White, Red – COP, Landing)
4.3 inch STN LCD (LCI, LCII)
TFT LCD

Button
Tempered glass button,
Stainless steel button, Aus button,
Singapore button, EN81-70 button

Note:
custom dimensions available



Horizontal COP
(SEC keypad)

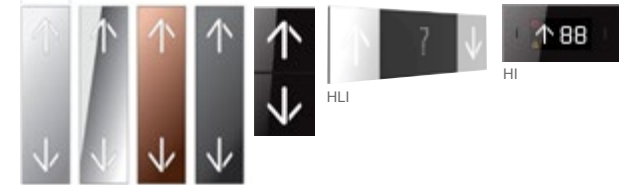


Horizontal COP
(SEC & TTC keypad)



Horizontal COP
(KDS floor button)

HALL LANTERNS AND INDICATORS



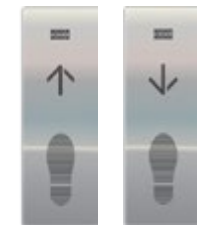
Large HL

BUTTONS



ST2

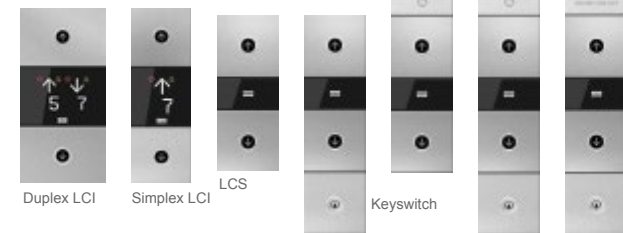
FOOT BUTTON



FB

LANDING CALL STATIONS

Note: custom dimensions available



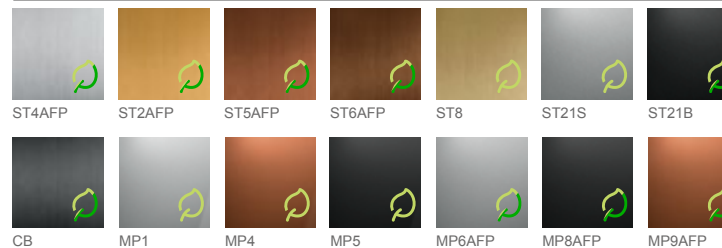
Duplex LCI

Simplex LCI

LCS

Keyswitch

FINISHES



ST4AFP

ST2AFP

ST5AFP

ST6AFP

ST8

ST21S

ST21B

CB

MP1

MP4

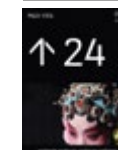
MP5

MP6AFP

MP8AFP

MP9AFP

KONE MEDIASCREEN



10.4 inch
TFT LCD vertical

Green Mark
LEED/BREEAM
LEED/BREEAM and Green Mark

KONE SIGNALIZATION

Our versatile, modern signalization range has everything you need to ensure clear guidance and make elevators as easy as possible for people to use. It includes flush and surface-mounted devices with a huge variety of options to cater for every possible design vision and practical requirement, including vandal-resistant features and options to ensure elevators are accessible for the visually impaired.

KDS 220

EXCELLENT USABILITY

Excellent usability and durable materials make the KONE KDS 220 a reliable choice. Whatever your elevator car interior, the timeless design provides the perfect complement.

CAR OPERATING PANEL (COP)

Faceplate finishes
Brushed stainless steel with anti-fingerprint coating (AFP)

Display
7-segment (white or amber),
Dot-matrix (white or amber),
STN LCD (white)

Horizontal COP (SEC Key Pad)

Horizontal COP (SEC & TTC keypad)

Horizontal COP (KDS floor button)

Partial height COP

Mounting types
Surface mounted: landing, partial height & horizontal COP
Flush mounted: full-height COP

Buttons
Round surface mounted, Braille as an option
Round surface mounted without braille & square surface mounted with braille for EN81-70-2018

Full height COP

FINISHES



BUTTONS



HALL LANTERNS & INDICATORS



HI



HL

LANDING CALL STATION



LCS without indicator

LANDING DEVICES



Duplex LCI

Simplex LCI

KSS 280

MODERN DURABILITY

The KSS 280 signalization family is designed to provide simple, reliable guidance in low and medium-rise residential buildings. Available with a partial or full-height COP, it features a sleek, hardwearing stainless steel faceplate and clear segmented LCD displays for the COP and landing devices.

CAR OPERATING PANEL (COP)

Faceplate finishings:
Asturias Satin Brushed Stainless Steel (F)

Displays:
Segmented LCD
LED display (KSH 280)

KSC 286
Partial height,
Surface mounted

reddot design award winner 2012

LANDING DEVICES

KSI 286 KSH 280 KSJ 280 KSL 270

KSL 280 KSL 284 KSL 286 Simplex KSL 286 Duplex

KSC 276
Full height,
Flush mounted

KSS 140

READY FOR ANYTHING

The KSS 140 vandal-resistant signalization family is designed for low and mid-rise buildings where the elevator equipment needs to be able to cope with tough challenges. Everything from the faceplate to the buttons, displays, and even the screws, is designed to be vandal resistant. KSS 140 signalization complies with the EN81-71 (Cat 1) standard for vandal-resistant elevators.

CAR OPERATING PANEL (COP)

Faceplate finishings:
Asturias Satin Brushed Stainless Steel (F)

Scottish Quad Textured Stainless Steel (K)

Displays:
Scrolling dot matrix (amber)

KSC 143PH, Partial height
KSC 143FH, Full height

FINISHES

ST4AFP

LANDING DEVICES

KSI 143 KSL 140

KSH 140 EN81-70 compliant landing call station

